

# Stand mounting / Stelenmontage



SMA eCharger stand (single sided / einseitig) - EVC-PDSTL-1-20

SMA eCharger stand (double-sided / doppelseitig) - EVC-PDSTL-2-20

**single-sided / einseitig**

1x (corner bracket), 1x (side panel), 1x (back panel), 1x (mounting plate), 4x M8x12 (screws), 4x (washers), 4x M5x10 (screws), 4x (washers), 4x M6x14 (screws), 4x (washers), 1x M5x40 (screw), 1x (corner bracket), 2x M6x10 (screws), 2x (washers), 1x (vent grille)

**double-sided / doppelseitig**

1x (corner bracket), 1x (side panel), 1x (back panel), 1x (mounting plate), 4x M8x12 (screws), 4x (washers), 4x M5x10 (screws), 4x (washers), 4x M6x14 (screws), 4x (washers), 1x M5x40 (screw), 2x (corner bracket), 4x M6x10 (screws), 1x (vent grille)

**Optional**

Ground structure for charging stand / Erdstück für Stelenmontage EVC-GD-PDSTL-10

IP44

W/B x H/H x D/T: 75 x 75 x 58 mm

W/B x H/H x D/T: 200 x 200 x 122 mm

**1**

600 mm, 350 mm, 350 mm

**2**

4x M10x20

**3**

4x M10x20, SW16

**4a**

4x M10x20, SW16

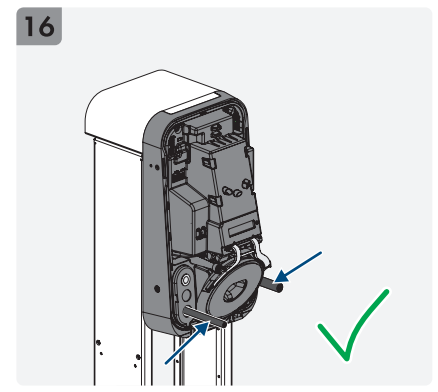
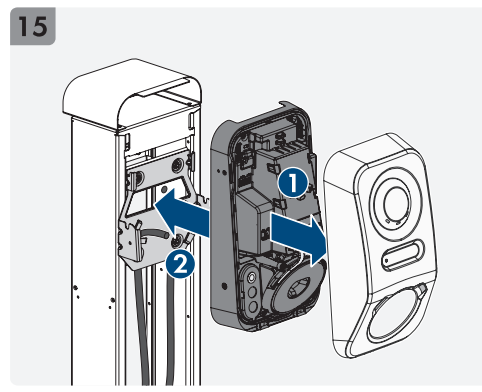
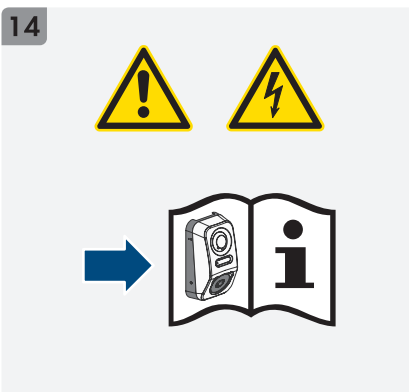
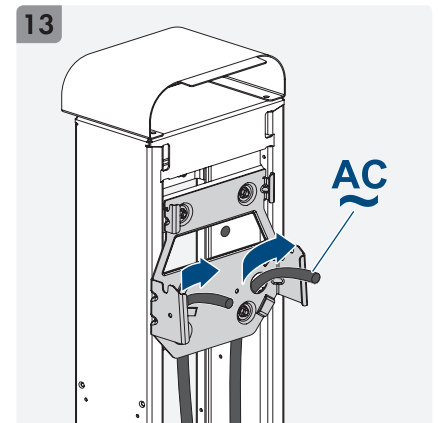
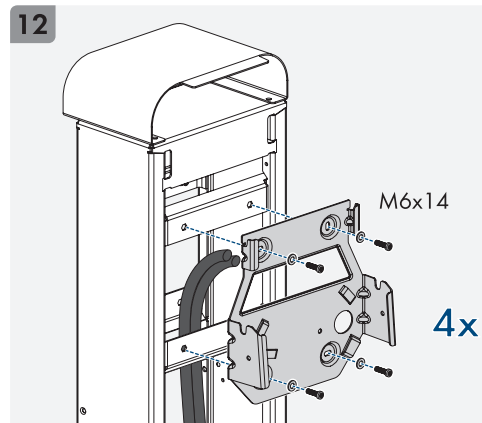
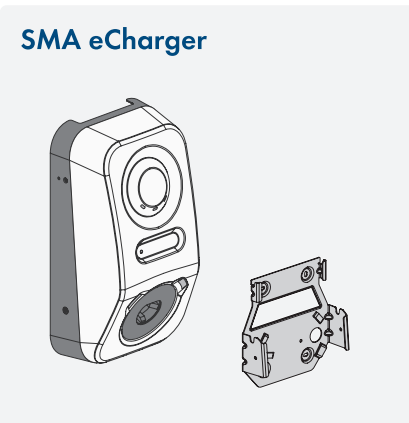
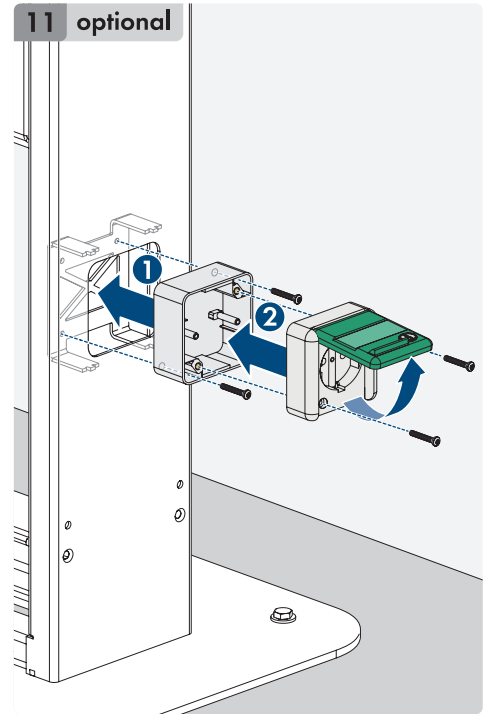
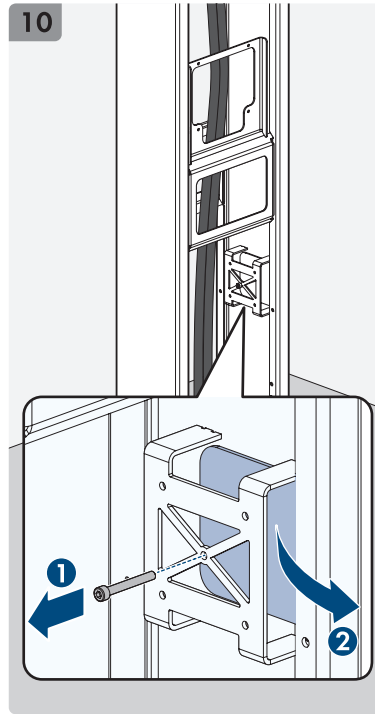
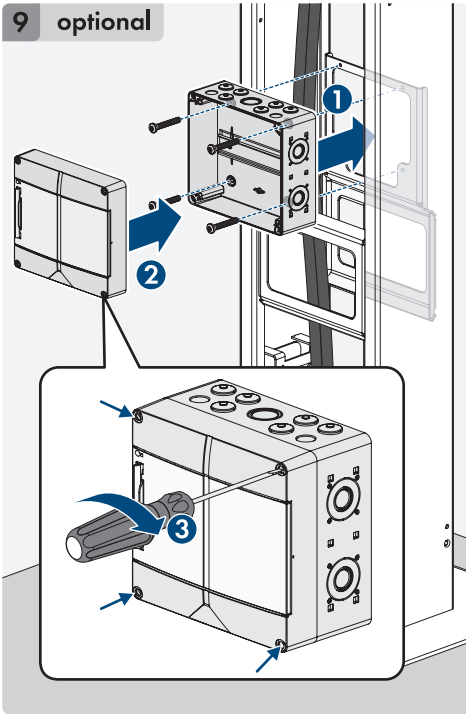
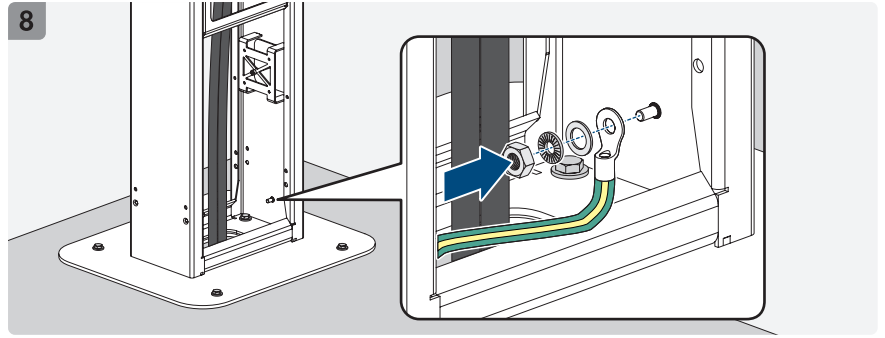
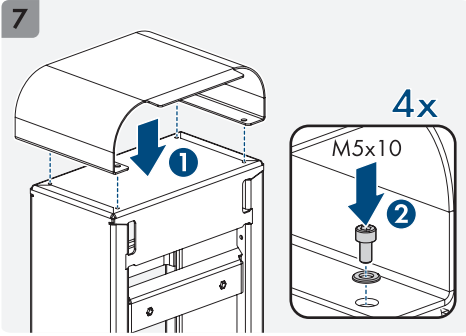
**4b optional**

4x M10x108, SW16

**5**

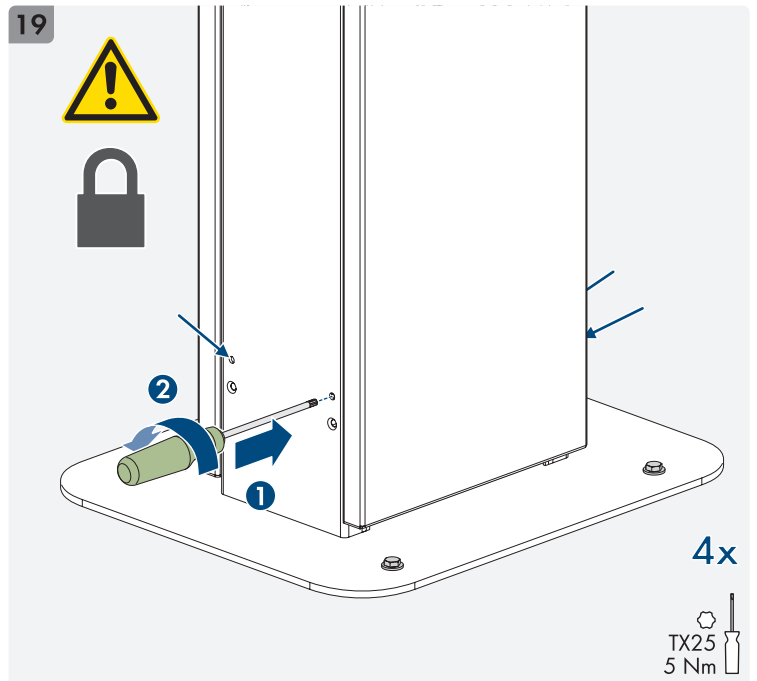
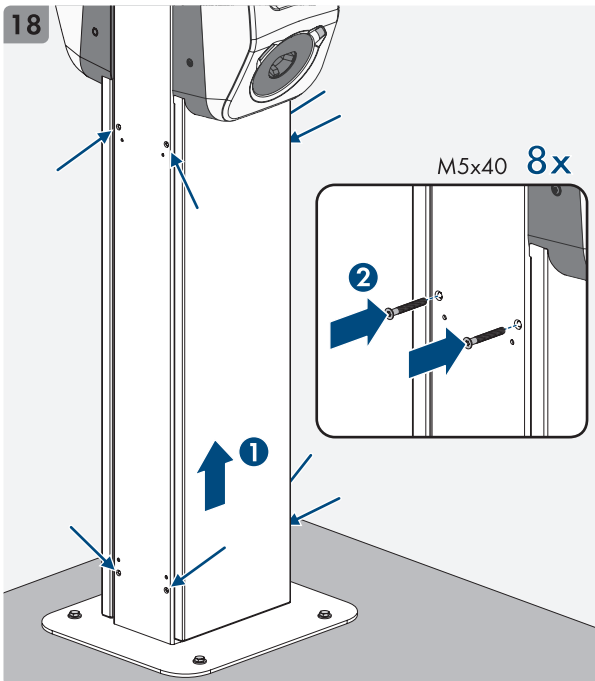
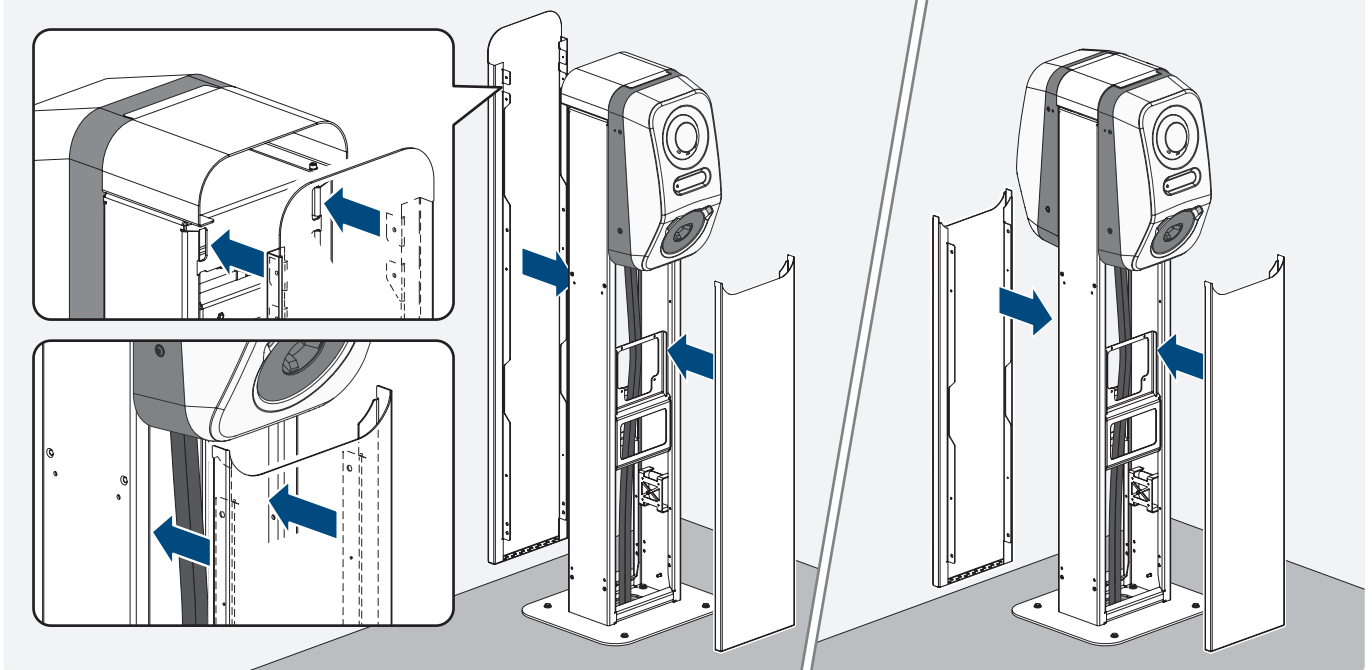
**6**

M8x12 4x, SW13 25 Nm



**17** single-sided / einseitig

double-sided / doppelseitig



**20** single-sided / einseitig

double-sided / doppelseitig

